

Maeda Mini Cranes MC285

<< MC174 CRM

MC305-2 >>

MC285 Image Gallery

See Technical Specifications

Contact us about this machine

Book a free demonstration

View Outrigger Loadings *

*= members only

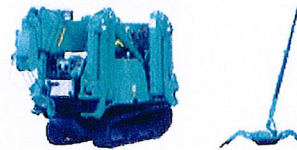
| | |
|-------------------------|---|
| Lifting Capacity | 2.82 ton x 1.4m |
| Engine Options | Diesel Diesel / Electric |
| Dimensions (mm) | Height: 1440 Width: 750 Length: 2715 Weight: 1770 kg |

The MC285 CRM(E) boxes way above his weight with a massive 2.82t lifting capacity and is only 750mm wide when stowed. Its slim body is able to fit through most doorways allowing access to areas previously inaccessible to standard cranes. The MC285 has proved to be one of the most popular models of Mini Crane, used for many varied applications.

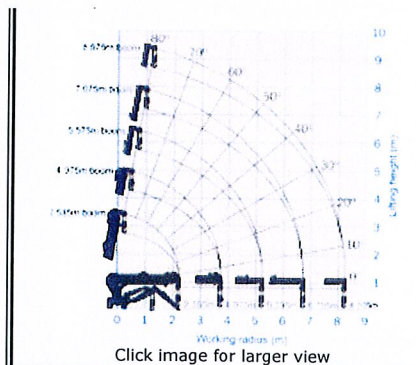
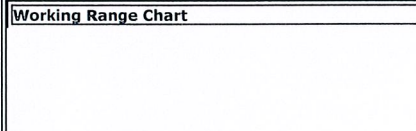
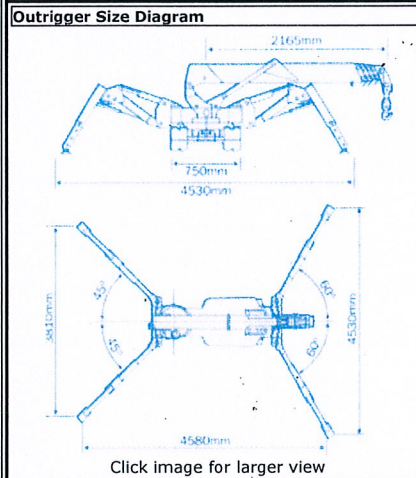
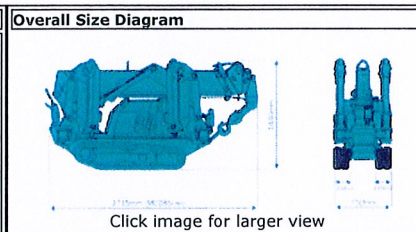
- 2 Year Warranty
- Slim Body Width (750mm)
- Low Ground Pressure
- Maneuverability & Stability
- Programmable Moment Limiter
- Hydrostatic Transmission
- Tilt Sensor/Alarm
- Track System For Easy Maneuvering
- Powerful 2 Speed Winch
- Hydraulic Disc Brake
- Remote Control
- **Optional Extras:** Searcher Hook, White Rubber Tracks, Single Fall Hook, Two Fall Hook, Slew Restrictor, Radio Remote Control.



Click images for larger view

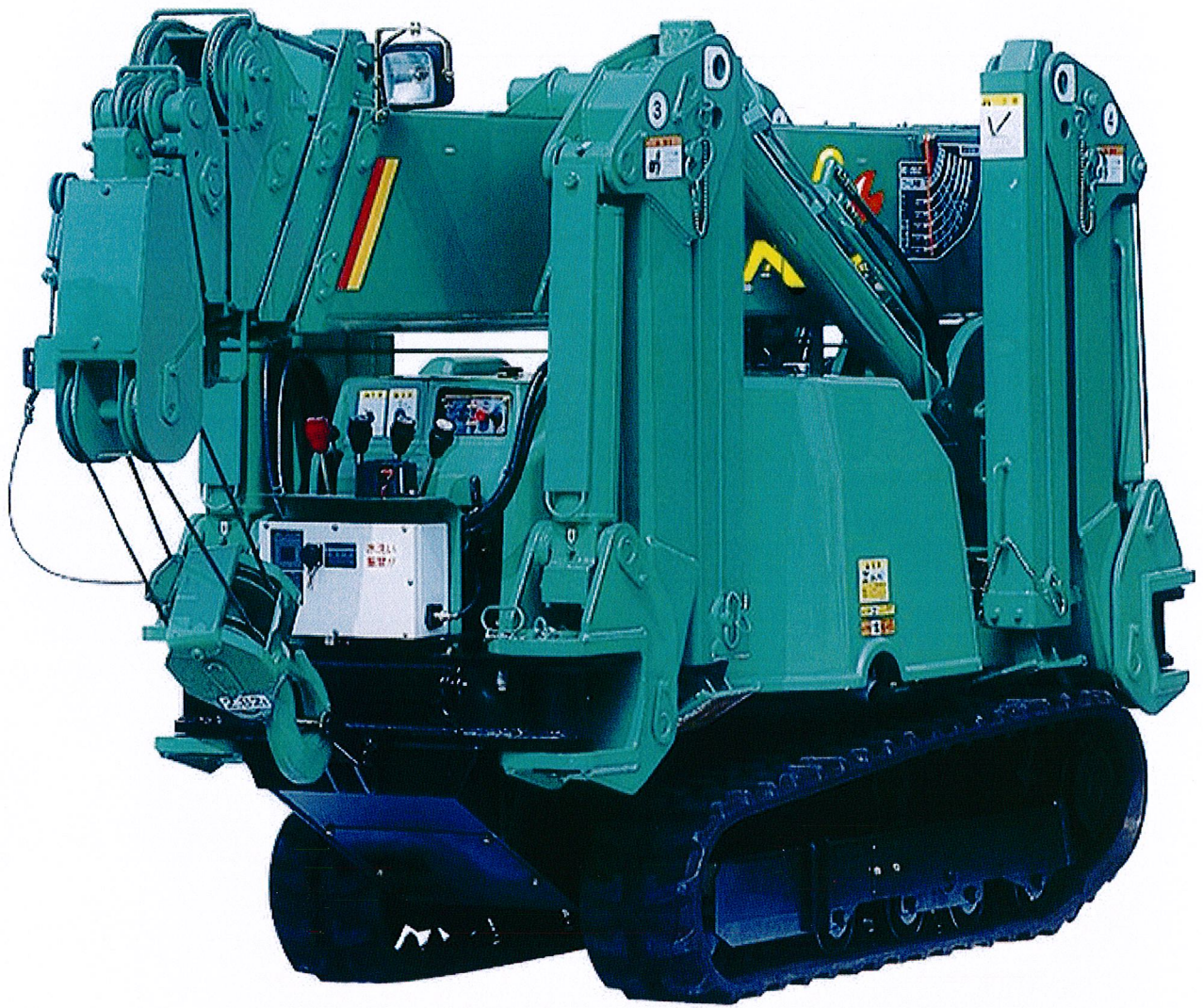


| Specification | |
|----------------------------------|---|
| Crane Capacity | 2.82 t x 1.4m |
| Max. Working radius | 8.205m x 150kg |
| Max. lifting height | 8.7m x 550kg |
| Hook Speed | 8m / min (4 falls, 3rd layer) |
| Single Line Speed | 32m x min (3rd layer) |
| Hoist Rope | IWRC 6 x Fi (29) Φ 7mm x 48m |
| Telescopic System | Boom length 2.535m - 8.575m Telescoping speed 6.04m / 22 sec. Boom type Fully automatic 5 section pentagonal telescopic boom |
| Boom hoist system | Hoist angle / speed 0 - 80° / 14 sec. |
| Slew system | Slew angle / speed 360° continuous / 1.0 rpm |
| Outrigger system | Type 4 Multi position box type with lock valves Max extended dimensions (Length) 4580mm x (Front) 4530mm x (Rear) 3810mm |
| Traction System | Drive Hydrostatic type, stepless forward and reverse 0 - 2.2 km/h Travel Speed 20° Gradability 975mm x 200mm (tracked dimensions) Crawler length x width Ground Pressure 0.45kgf / cm ² CRM (0.50 kgf / cm ² CRME) |
| Engine | Model Yanmar 2TNE68-ME Type 2 cylinder water cooled diesel Rated output 7.4 Kw / 2600 rpm Starting method Electric Fuel tank / capacity Diesel / 12L |
| Electric Motor M285CRM(E) | Type Fully enclosed fan cooled motor Size 5.5 Kw 4P 400V |
| Remote Control System | Cable remote controller, micro-speed mode, outrigger operation. |
| Dimensions | MC285CRM Length x Width x Height 2715mm x 750mm x 1440mm Weight 1770kg MC285CRM(E) Length x Width x Height 3285mm x 750mm x 1440mm Weight 1950kg |
| Standard Equipment | Working light, hour-meter, 4-fall hook block, black rubber tracks and safe load indicator. |
| Optional Equipment | White rubber tracks, single fall hook, two fall hook, searcher hook (300kg max. capacity, weight approx 30kg), radio remote control. |

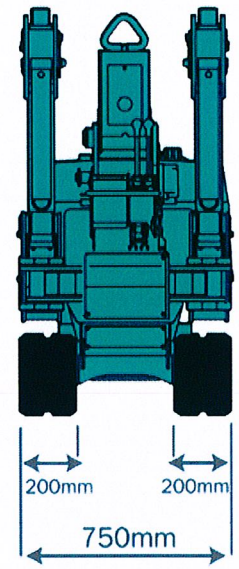
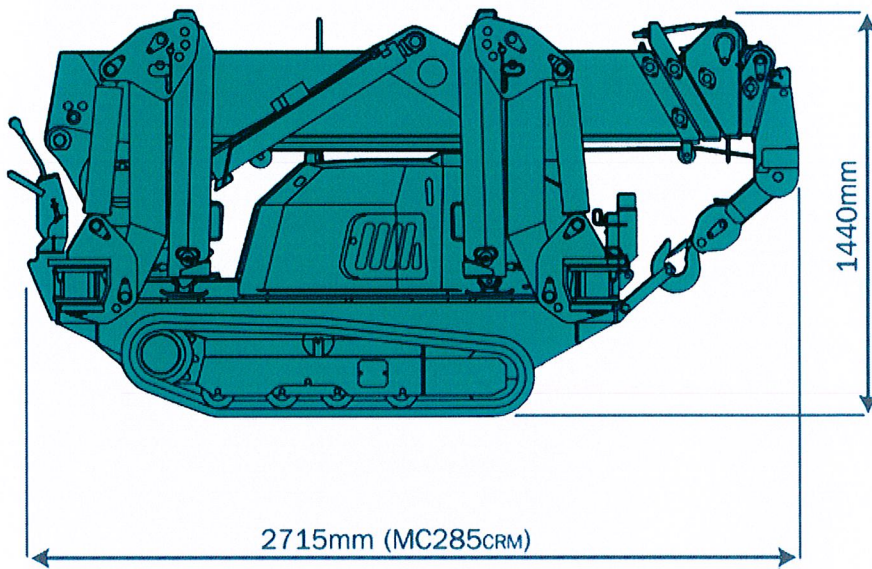


| 4.75m boom | | 5.57m boom | | 7.07m boom | | 8.57m boom | |
|--------------------|--------------------|--------------------|--------------------|--------------------|--------------------|--------------------|--------------------|
| Working radius (m) | Load capacity (kg) | Working radius (m) | Load capacity (kg) | Working radius (m) | Load capacity (kg) | Working radius (m) | Load capacity (kg) |
| 0 | 1500 | 0 | 1500 | 0 | 1500 | 0 | 1500 |
| 1 | 1400 | 1 | 1300 | 1 | 1100 | 1 | 900 |
| 2 | 1200 | 2 | 1000 | 2 | 800 | 2 | 600 |
| 3 | 1000 | 3 | 800 | 3 | 600 | 3 | 400 |
| 4 | 800 | 4 | 600 | 4 | 400 | 4 | 200 |
| 5 | 600 | 5 | 400 | 5 | 200 | 5 | 100 |
| 6 | 400 | 6 | 200 | 6 | 100 | 6 | 50 |
| 7 | 200 | 7 | 100 | 7 | 50 | 7 | 25 |
| 8 | 100 | 8 | 50 | 8 | 25 | 8 | 12.5 |
| 9 | 50 | 9 | 25 | 9 | 12.5 | 9 | 6.25 |
| 10 | 25 | 10 | 12.5 | 10 | 6.25 | 10 | 3.125 |

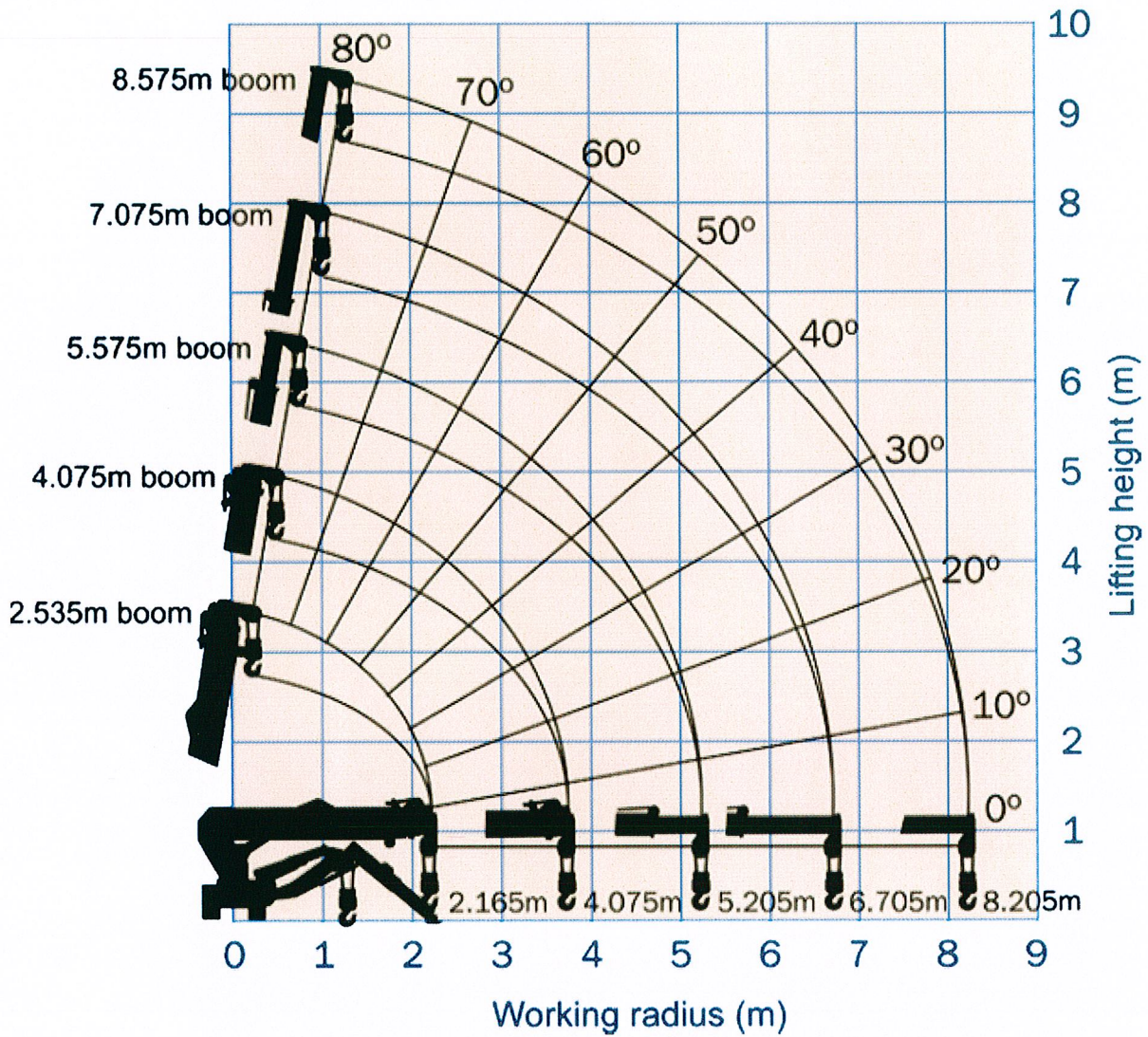




Overall Size



Working Range Chart



Total rated load Outriggers at Maximum position

| 4.075m boom | | 5.575m boom | | 7.075m boom | | 8.575m boom | |
|--------------------|-----------------------|--------------------|-----------------------|--------------------|-----------------------|--------------------|-----------------------|
| Working radius (m) | Total rated load (kg) | Working radius (m) | Total rated load (kg) | Working radius (m) | Total rated load (kg) | Working radius (m) | Total rated load (kg) |
| < 1.4 | 2820 | < 3.0 | 1220 | < 3.6 | 820 | < 4.0 | 550 |
| 1.5 | 2520 | 3.5 | 970 | 4.0 | 740 | 4.5 | 400 |
| 2.0 | 1920 | 4.0 | 780 | 4.5 | 580 | 5.0 | 340 |
| 2.5 | 1570 | 4.5 | 630 | 5.0 | 480 | 5.5 | 300 |
| 3.0 | 1220 | 5.0 | 530 | 5.5 | 430 | 6.0 | 270 |
| 3.5 | 970 | 5.205 | 530 | 6.0 | 380 | 6.5 | 230 |
| 3.705 | 920 | | | 6.5 | 350 | 7.0 | 200 |
| | | | | 6.705 | 330 | 7.5 | 180 |
| | | | | | | 8.0 | 150 |
| | | | | | | 8.205 | 150 |

Total rated load Outriggers at any other position

| 4.075m boom | | 5.575m boom | | 7.075m boom | | 8.575m boom | |
|--------------------|-----------------------|--------------------|-----------------------|--------------------|-----------------------|--------------------|-----------------------|
| Working radius (m) | Total rated load (kg) | Working radius (m) | Total rated load (kg) | Working radius (m) | Total rated load (kg) | Working radius (m) | Total rated load (kg) |
| < 1.5 | 1720 | < 3.0 | 510 | < 3.6 | 400 | < 4.0 | 330 |
| 2.0 | 1070 | 3.5 | 410 | 4.0 | 330 | 4.5 | 280 |
| 2.5 | 630 | 4.0 | 330 | 4.5 | 280 | 5.0 | 230 |
| 3.0 | 520 | 4.5 | 280 | 5.0 | 230 | 5.5 | 180 |
| 3.5 | 430 | 5.0 | 230 | 5.5 | 180 | 6.0 | 160 |
| 3.705 | 350 | 5.205 | 200 | 6.0 | 160 | 6.5 | 150 |
| | | | | 6.5 | 150 | 7.0 | 100 |
| | | | | 6.705 | 140 | 7.5 | 80 |
| | | | | | | 8.0 | 70 |
| | | | | | | 8.205 | 60 |

Outrigger Spread Dimensions

